

# South Tahoe High School



2022!

April 2, 2019  
WELCOME!

Carline Sinkler - Principal

# Our Goals & Norms for Collaboration

## ANNOUNCEMENTS

- Thank you Boosters!

## OUTCOMES

- Review Viking Vision essentials
- **Give input on actions** that promote Viking Vision Goals/Objectives
- Give input on Viking Graduate Profile **focus quality**
- Exit ticket

## Norms for Collaboration

- Listen to understand
- Challenge our own assumptions
- Build on ideas
- Assume best intentions



## Vision of Student-Centered Learning:

Students develop a sense of purpose through authentic collaboration and real-world learning.

### Viking Graduate Profile: 5Cs & Healthy Independence

Critical Thinking  
Collaboration  
Curiosity  
Communication

#### **Character**

Healthy Independence

### Viking Vision Goals

1. College, Career and Life Readiness
2. Access and Equity
3. Belonging and Community Connectedness
4. Family Engagement

### Viking Vision Key Actions

1. Enhance professional learning, development and engagement of staff.
2. Ensure access to pathways and course sequences that lead to college and career preparedness for students in all subgroups.
3. Expand family engagement and communication.
4. Implement strategic systems of academic and behavioral intervention and support.
5. Deepen community and workforce partnerships.
6. Engage students as change agents.



South Tahoe High School

# Viking Graduate Profile



## Critical Thinking

- Divergent Thinking • Creativity • Strategic & Extended Thinking
- Links Learning

## Collaboration

- Works With Others • Values Teamwork
- Appreciates Variety of Learning Styles

## Curiosity

- Committed to Lifelong Learning • Self Directed
- Exploration of Purpose • Takes Initiative
- Motivated by Questions

## Communication

- Shares Verbally & in Writing • Authentic Interaction
- Shares Ideas • Active Listening • Understands Nonverbal Cues & Cross • Cultural Differences

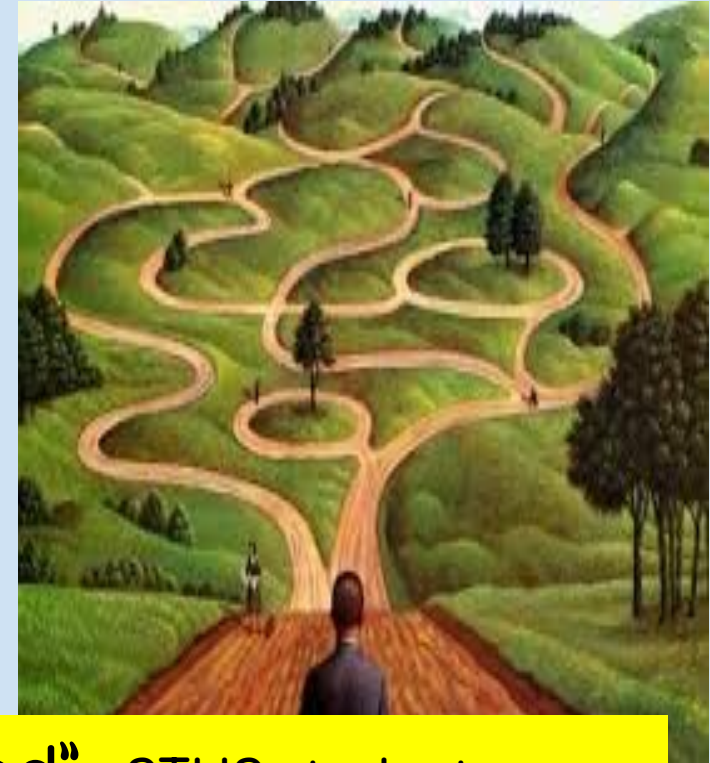
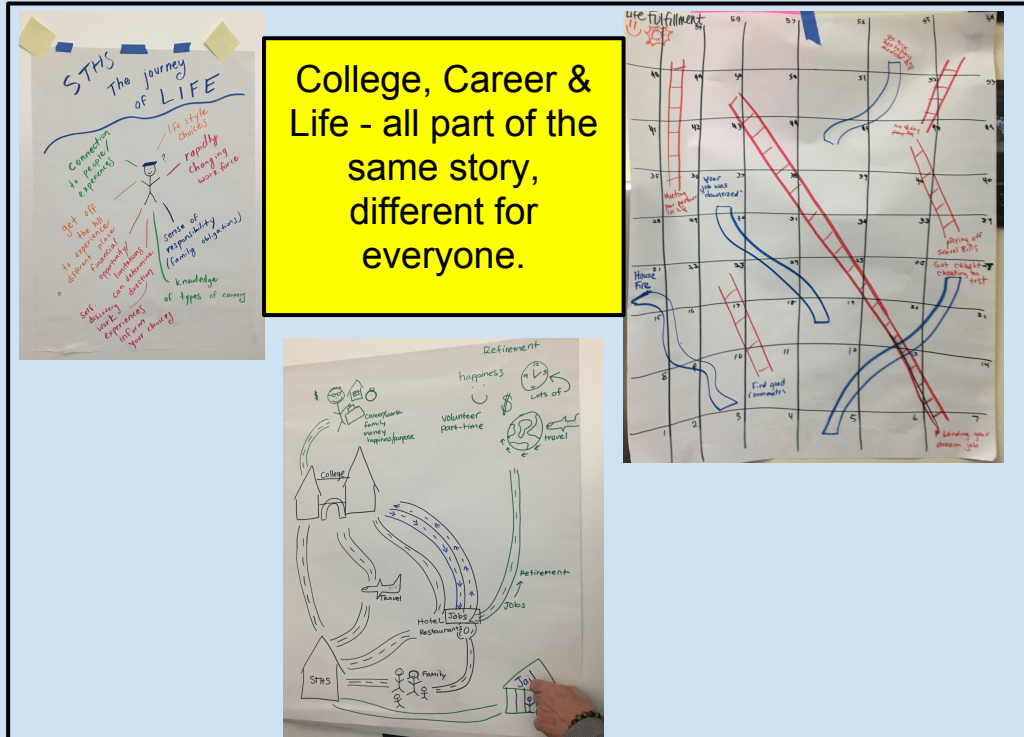
## Character

- Empathy • Resilience • Personal Responsibility
- Confidence • Grit

## Healthy Independence

- Make Healthy Choices • Practices Healthy Habits
- Positive Peers • Develop Skills to Manage & Maximize Personal Finances

## GOAL 1: College, Career and Life Readiness

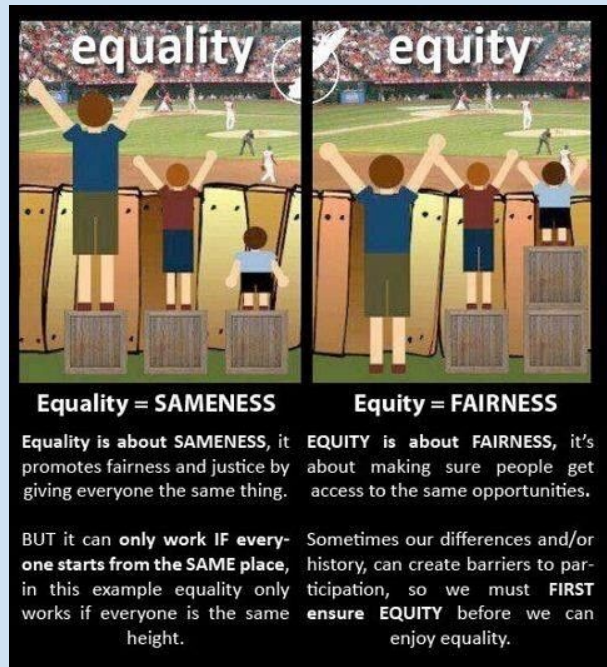




## GOAL 2: Access and Equity

*Equity and excellence approach:  
accelerate progress for  
underperforming student groups  
while raising academic achievement  
for all.*

**An equity tide lifts all boats.**



## GOAL 3: Belonging & Community Connectedness

When students feel connected, supported, respected & valued they:

- Engage fully in learning
- Build positive relationships
- Persevere in the face of difficulty
- Open to feedback
- DO BETTER IN SCHOOL!

**Not belonging causes uncertainty & stress**

- Uses up cognitive (learning) resources - diminish performance and relationship building

## GOAL 4: Family Engagement:

All about trusting relationships & student learning

**Connected, Inclusive, Knowledgeable**





# Warm Up

What does  
**ACCOUNTABILITY** mean  
to you?

## Accountability



Respond at **PollEv.com/csinkler114**



Text **CSINKLER114** to **37607** once to join, then text your message

# LCAP - Local Control Accountability Plan

## **LTUSD Goals:**

1. Increase Academic Performance for All Students
2. Enhance Communication and Collaboration with Stakeholders
3. Maintenance & Operations to Support Instructional Programs
4. Quality Education Access for Foster Youth

# Viking Vision Goals & Actions

1. College, Career &  
Life Readiness
2. Access & Equity
3. Belonging &  
Community  
Connectedness
4. Family  
Engagement

1	2
3	4

Sort the actions in the packet into the goals. If an action overlaps, place it in the middle.  
Think about what might be missing given what our students need us to do.

# Feedback and New Actions - Walk About

All four goals are on the walls.

- Think about actions we are already working on.
- Circulate around the room and add to the posters.

Goal # ____	
Keep it up!	Need to add

# 2019-2020 Viking Graduate Profile Focus Quality

Which Viking Graduate Profile quality do you think students need us on next year?

 Respond at [PollEv.com/csinkler114](https://www.poll-ev.com/csinkler114)

 Text **CSINKLER114** to **37607** once to join, then **A, B, C, D, or E**

Collaboration **A**

Communication **B**

Curiosity **C**

Critical Thinking **D**

Healthy Independence **E**



South Tahoe High School

## Viking Graduate Profile

### Critical Thinking

- Divergent Thinking • Creativity • Strategic & Extended Thinking
- Links Learning

### Collaboration

- Works With Others • Values Teamwork
- Appreciates Variety of Learning Styles

### Curiosity

- Committed to Lifelong Learning • Self Directed
- Exploration of Purpose • Takes Initiative
- Motivated by Questions

### Communication

- Shares Verbally & in Writing • Authentic Interaction
- Shares Ideas • Active Listening • Understands Nonverbal Cues & Cross • Cultural Differences

### Character

- Empathy • Resilience • Personal Responsibility
- Confidence • Grit

### Healthy Independence

- Make Healthy Choices • Practices Healthy Habits
- Positive Peers • Develop Skills to Manage & Maximize Personal Finances





**2022**

## EXIT TICKET

Please add any comments on actions our schools can take to improve student achievement and the school experience.

Do you think we should add another goal to Viking Vision? If yes, describe.